

What Your Kit Contains

- 2 x Tooth Washers
- 2 x Blue Ring Terminal
- 4 x 18" Tie Straps
- 4 x 1" Hex Head Self Drilling Screws
- 1 x Rubber Mounting Pad
- 1 x Velcro Adhesive pad (male & female)
- 1 x Alcohol Cleaning Pad
- 2 x 10" Black Coated Bracket
- 2 x Nylon lock nuts
- 1 x 1-1/4" Machine Screw with Robertson slot
- 1 x 3/4" Machine Screw with Robertson slot
- 2 x 1/2" Hex Head Self Drilling Screws
- 1 x Electromagnetic Corrosion Module

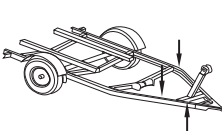
Tools Required

- Power Screw Driver with Hex Head bit
- Pliers

Installation video also available on-line: [www.defender-plus.com](http://www.defender-plus.com)

1 Finding Module Location

Select a location in the trunk or another protected compartment of the vehicle where the module can be installed. For trailers select a location along the side of the trailer as close to the front of the trailer as possible where the module can be installed away from any abrasion or direct water spray (see suggested locations). Ensure that the location will be able to host both black and green wires so that an appropriate connection and ground can be made to the galvanized metal.



Suggested Locations
Trunk compartment
Under the seats
In engine compartment
Behind rear seat of pick-up
Spare tire compartment

Suggested Locations
Tongue of boat trailer
Inside of horse trailer (roof, sidewall, frame & where the horse can't get to it)
5th Wheel (inside goose neck)

2 Inserting Batteries

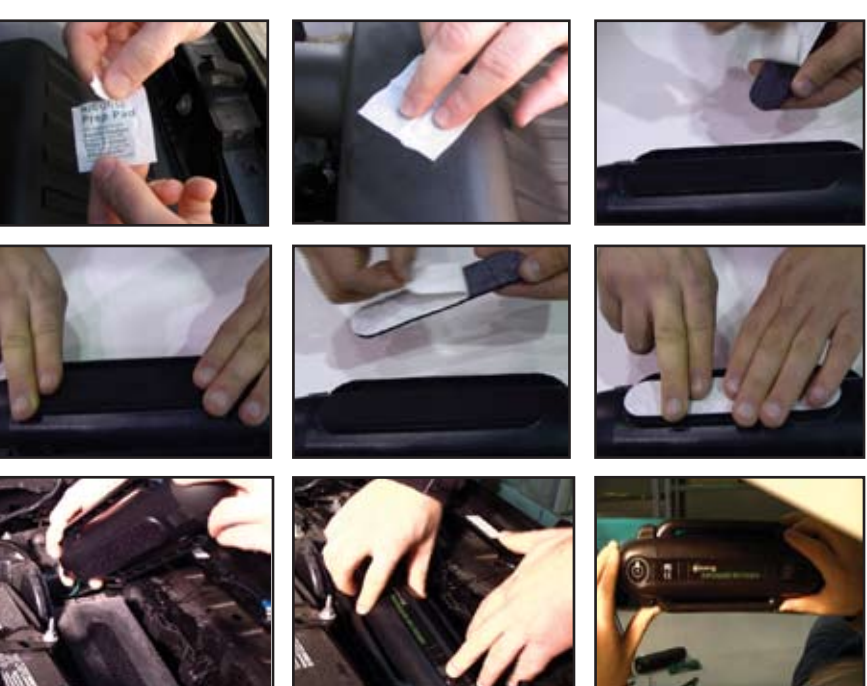
Remove the battery end cap opposite the power test end by releasing the retainer clasp located on the back of the unit. With a gentle counter clockwise 1/8th of a turn, release the side retainers. Note the polarity of the batteries when installing 8 alkaline "C" cell batteries. Replace cover and gently twist the cap clockwise until side retainers are engaged. Snap the retainer clasp back into place.



**\*\* (Batteries are not included) \*\***

3 Placement of Module to Vehicle/Trailer

Using the alcohol-cleaning pad, clean the surface area where the module is to be mounted on your vehicle/trailer. Remove the backing from the rubber shock absorber pad and press it firmly against the back of the module. Next, remove the backing from the Velcro pad and the rubber shock absorber pad and press them firmly together. Remove the backing from the other side of the Velcro strip, and place the module on the clean surface area of the vehicle/trailer.

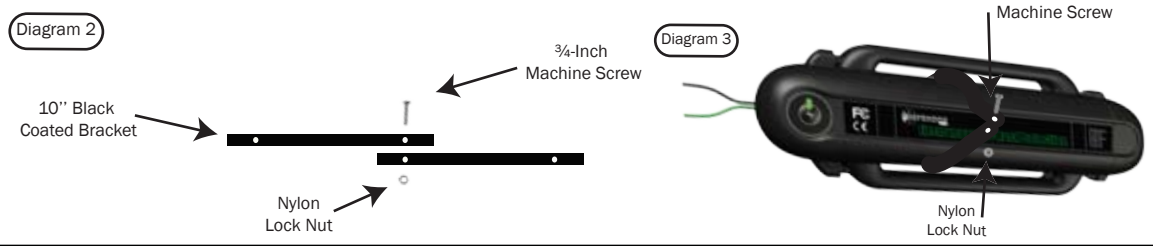


When you have the module in place, take the two black rubber coated straps and gently bend the straps to form a "U" shape to place around the body of the module and through the arms. (In a secure area straps may not be necessary.) Be sure to line up the strap with the guidelines on the label. Bend the ends of these straps to form a 90-degree angle so that the pre-drilled holes on the strap are flush with the vehicle/trailer surface. Follow the same procedure for the second strap. Once both straps are in place, secure the straps to the vehicle by using the four 1" self-drilling hex head screws supplied to fasten the module to the surface of the vehicle/trailer. (See Diagram 1)



Alternative for Strapping Module to Vehicle/Trailer

If you do not wish to drill directly into your vehicle, or do not have a secure area within which you can mount your module, you can bind the rubber coated straps together using the 3/4-inch machine screw and nylon lock nut supplied. Connecting the rubber-coated straps will create one long strap that can be used to wrap around the module (See Diagram 2), through the arms to be secured to the vehicle. Then take the 1 1/4-inch machine screw and nylon lock nut supplied and secure the open end of the connected rubber-coated straps to a secure bracket. (See Diagram 3)



5 Grounding Black Wire to Vehicle/Trailer

Now that you have the module strapped in securely, you can connect the black wire to a convenient grounding location at least 4 feet away from the module on the vehicle/trailer and as far away as possible from the green wire. Take the blue ring terminal supplied and slide it over the end of the black wire. Using pliers, crimp the bottom of the blue ring terminal to the black wire, applying enough pressure to form a permanent connection. Next, using a Quarter Inch Hex Head Driver, fasten the blue ring terminal to the vehicle/trailer using the supplied 1/2-inch screw (ensure the tooth washer is placed between the blue ring terminal and the body of the vehicle/trailer with the teeth pointed toward the vehicle/trailer). With the loose wire use the 18-inch tie straps to secure the wire to the vehicle/trailer.



Note: The green output wire, which delivers the pulse RF signal to the grounded galvanized metal, must be secured directly to the metal and connected at least 4 feet from where the black wire is connected. Never hook up the green wire less than 4 feet away from the black wire. (See Diagram 4)

6 Grounding Green Wire to Vehicle/Trailer

When choosing a location for the green wire, use the 1/2-inch self-drilling screw and the tooth washer to ensure a proper ground connection. Using pliers, crimp the bottom of the blue ring terminal to the green wire, applying enough pressure to form a permanent connection.



Once the green wire and the blue ring terminal are secure, use a Quarter Inch Hex Head Driver to fasten the blue ring terminal to the vehicle/trailer using the supplied screw (ensure the tooth washer is placed between the blue ring terminal and the body of the vehicle/trailer with the teeth pointed toward the vehicle/trailer). With the loose wire use the 18-inch tie straps to secure the wire to the vehicle/trailer.



7 Additional Information

For Pick-up trucks: be sure that the box or load area is part of the vehicle's grounding system. If not, attach a grounding strap from the underside of the box to the vehicle grounding system.

8 To test the module, simply press the test button to see if the green LED light turns on. If not, check the batteries. We recommend changing your batteries annually.



9 We recommend using split loom to hide the wires and protect them from heat and moisture. This will also give the installation a clean and professional look.

